

Time Reorder Utility User Manual

Revisions.....	3
Introduction.....	4
Getting Started.....	5
Running Modes.....	7
Tray icon menu.....	7
Enter Password.....	8
Connections.....	8
Define Connections	8
Verify Connections	9
Normal Mode.....	10
Terminal Properties	10
Download Time Data	12
Extended Mode.....	14
Configure Security Settings.....	15
User	16
Time Zone	18
Holiday Groups	19
Control Assign	21
Master Card.....	21
Miscellaneous.....	23
Automation	25
View Time Data	27
Handle the Terminals.....	29
Lock specified terminal.....	29
Set specified terminal to Normal Mode	29
TRU - Client Program	30
User Level Security – Set Accounts and Permissions.....	30
Installation.....	31
First Launch	31
Run the TRU – Client program.....	32
Maintain Database	33

Backup Database.....	34
Clear Time Data.....	34
Restore Database.....	34
Compact Database	34
<i>FAQ.....</i>	<i>34</i>
<i>Contact Us</i>	<i>36</i>

Revisions

Release Date	Version	Description
7/28/2005	V1.0	Original document release SW Version : V1.1R9
2/15/2006	V1.1	Add. ● Support TR510-515 terminal Modify. ● Rename program from [TR4020-4030 Downloader] to [Time Recorder Utility] SW Version : V1.1R17

Introduction

Time Recorder Utility (TRU) program is used to communicate with TR40xx / TR51x series time recorder terminal. By TRU, it is easy to download the punch time data or utilize the terminal just only by a single click, such as setting up the date, time, bell tables or any other properties that the terminal owns.

TRU supports multi-connected terminals network, no matter the communications are going through RS232 or Ethernet (UDP/TCP protocol). It also allows you to schedule the time for downloading the time data. Even more, with the Extended Mode, TRU can implement the connected terminal to be an access control terminal. This will allow the terminal to control the door lock to meet your security policies.


Getting Started


Getting started with Time Recorder Utility (TRU) is easy. This chapter provides a procedural checklist, along with instructions on the set up and installation of the TRU program on the PC.

The following check list of activities will insure you have everything set up correctly.

1. Install Time Recorder Terminal
 - Install Terminal (refer to Hardware User Guide).
 - Connect communication cable.
 - For RS232 interface terminal: Connect the cable from terminal to PC.
 - For Ethernet interface terminal: Using WAS1498 cable to direct connects from terminal to PC. Or using WAS1499 cable to connect via hub.
 - Attach power connector.
2. Install Program
 - Optimize PC if required and make sure your system is sufficient¹.
 - Install the TRU program on your PC.
 - Set up terminal information².
 - Set up the file name & path that the downloaded time data is going to be saved to³.
3. Test the system by:
 - Enter several in and out punches in the terminal.
 - Poll or manually download the data clock in TRU Communications⁴.
 - Check the downloaded time data by the Notepad program⁵. Data should appear for all badge IDs that have been punched. Be sure correct date is set up in terminal.

Notes:

1. System Required:
 - Microsoft Windows version Windows 98/ME/NT/2000/XP
 - 30MB free hard drive space
 - ※ The Windows NT should be installed the SP3 and IE4.01 or later version.
 - ※ The Auto E-mail function must be associated with the Email Account of the Outlook Express v5.5 or later version.
2. On the [Connections] Inspection, click  to add a terminal with the specified IP or Comport.
3. On the [Tools] menu, click [Option]. Select the [Download] tab, type the file name and path

4. On the [Download] Inspection, select the terminal that you just added. Click  on the toolbar to download data.
5. From [Start] menu, click [Programs]/[Accessories] and launch the Notepad program.

Running Modes

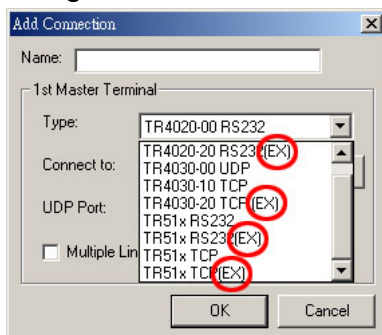
The mode defines the behaviors that TRU should run, Normal Mode or Extended Mode. Below is the comparison table for these two modes.

Functions Supported	Normal Mode	Extended Mode
Retrieve time data stored in the internal memory of terminal	○	
Modify Properties	○	
Real-time get punch time data		○
Real-time display message		○
Real-time control relay		○

For the Normal Mode, the connections between terminals and TRU will not be established until a command is issued. The command could be downloading time data, retrieving or editing terminal properties. After the command is executed (completed), the connection will be terminated.

The Real-time means access right away. This function is mainly used for access control purposes. While TRU is starting the Extended Mode, the connections between terminals and TRU will be established. The connections are kept all the time until TRU goes into Normal Mode or ended. Keep the connection opened will let TRU get the punch time data instantly, not like the Normal Mode, using the polling method to get time data.

Not all terminals support Extended Mode, only the connection type with (EX) are allowed using this features.



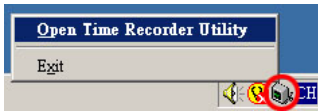
Tray icon menu

When TRU is running you can see its icon in the system tray bar (which usually located in the right-bottom corner of screen, near the system clock). Tray icon menu is available by right mouse button click on TRU icon in the system tray. Normal Mode and Extended Mode are using different icons.

For Normal Mode:



For Extended Mode:



Tray icon menu contains the items:

- **Open Time Recorder Utility:** Open TRU window.
- **Exit:** End the program.

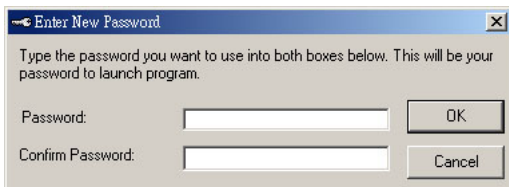
Enter Password

A password is always needed on below conditions:

- Launching TRU main window
- Exit program



Note: if you are using TRU first time, the TRU will require you to enter a new password. Please keep this password for future uses. If the password is lost, you cannot enter the program anymore.




Connections

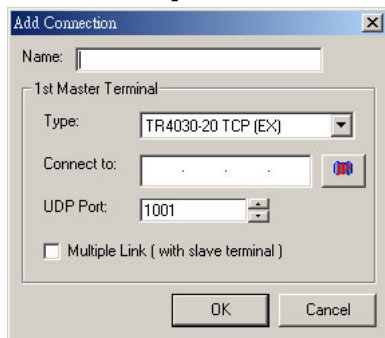
Define Connections

Before starting to communicate with terminals, the connection has to be defined first. A connection contains the information that can tell TRU how to communicate with the connected terminal, and the properties that the terminal owns.


For TR51x series, each connection only contains one terminal. For TR40xx series, each connection may contain one or more than one terminals (with slave terminal connected).

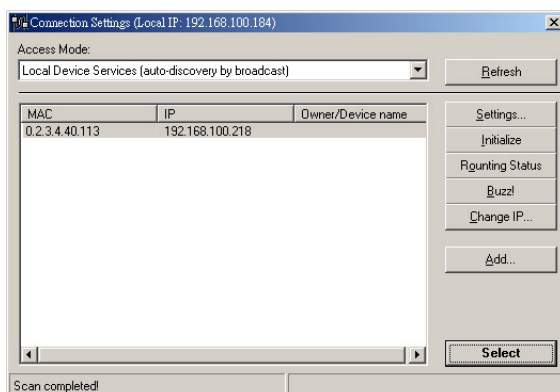
To define a new connection, please do the following steps:

- Go to [Connections] inspection.
- Click , a [Add Connection] window will pop up.



- Enter a connection name.
- Select terminal type.
- Specify the Comport or IP where the terminal is connected.
- Enter Port (Only for Ethernet interface).
- If with slave terminal(s) connected, select [Multiple Link] (Only for TR40xx series).
- Click [OK] to save the change.


If the protocol that terminal uses is TCP, and is in the same subnet as PC (TRU installed), then you can click  to specify or change the terminal's IP.

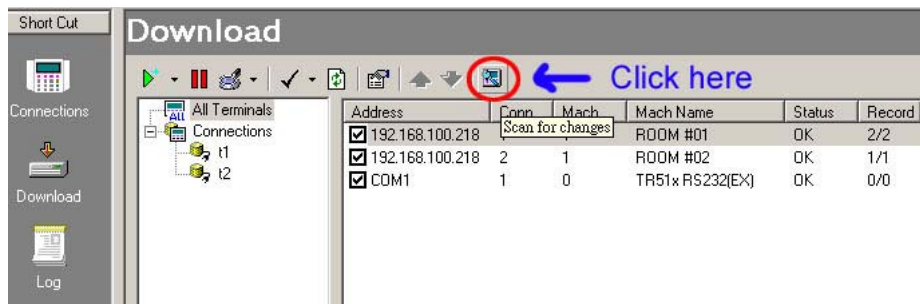


Verify Connections

After adding or editing a connection, it should verify the connection right away to ensure the settings are correct or not.

To verify connections, please do the following steps:

- Go to [Download] inspection.
- Click  for scanning the changes.




- View the [Status] column to get the scanning result.
- If the [Multiple Link] of connection settings is selected, the connected slave terminal(s) will be displayed on the list view.

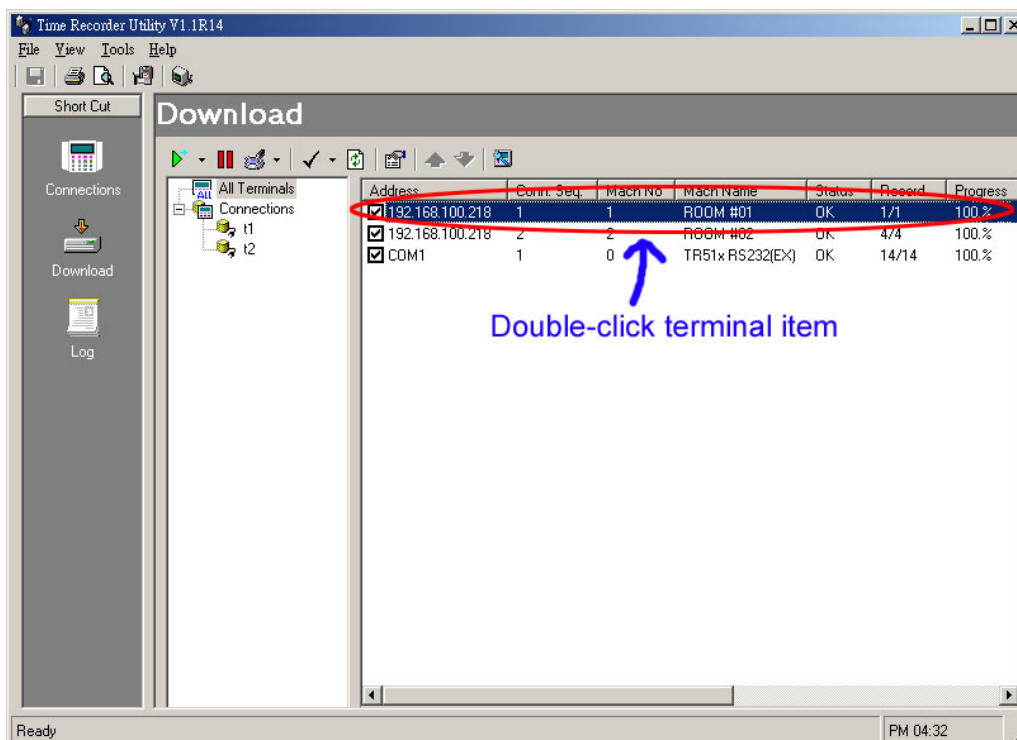
If the scanning result is failed, please re-check the connection settings, and the communication cable / terminal power is proper set or not.

Normal Mode

Under the Normal Mode, you can easily access all the information of the specified terminal, or download the time data that stored in the internal memory.

Terminal Properties

Each terminal contains its own properties, such as machine number, date, time, bell tables and so on. To display the properties values, in the [Download] inspection, double-clicking the specified terminal on the list view, or select the terminal, then click .



A properties window will pop up as below.

TR40xx series properties window:

Property	Value
Machine Number (0-9999)	1
Machine Name (0-16 chars.)	ROOM #01
Time (hh:mm:ss)	17:21:53
Date (DD-MM-YYYY)	03-01-2006
Date display format	0-DD-MM-YYYY
Login Password (0-8 chars.)	*****
Bell duration (0-99 sec., 0-disabled)	10
Bell Table	<Table>
Default Event Table	<Table>
Default shift string (up to 8 chars.)	
Maximum length of shift code (2-8 digits)	2
Keypad function (Shift/D-code/Locked)	0-Shift entry
Lock activation duration (0-99 sec., 0-disabled)	0-disabled
Internal reader, prefix (0-16 chars.)	
Internal reader, extract from character (1-40)	1
Internal reader, num. of chars. to extract (1-40)	38
External scanner, prefix (0-16 chars.)	
External scanner, extract from character (1-40)	1

Device is connected to: COMM0 Source: 1

TR51x series properties window:

Property	Value
Machine Number (0-255)	0
Date/Time	2006/1/3 17:23:36
Display Mode	0 - Wall-Mount
Bell Duration (0-255)	10
Bell Table	<Table>
Event Mode	0 - Depend on User
Event Table	<Table>
Unlock Duration (0-255)	10
Relay Is Used For	0 - Bell
Prefix (0-16 chars.)	
Extract From Character (1-37)	1
Number of Character to Extract (1-37)	37
Daylight Saving Time	0 - Disabled
Daylight Saving Time - Start Date (MM/DD)	01/01
Daylight Saving Time - End Date (MM/DD)	01/01
Bell Table Mode	0 - Everyday

Connect to COM1

For TR40xx series, some properties need to login before editing. To login, from [Tools] menu, click [Login]. If the password is not blank, then a password required window would pop up. After entering a correct password, the terminal will go into login mode. To modify the property value, just double-click the item value. After entering a wanted value. Click [OK] to save the change.

Item Value: ROOM #01

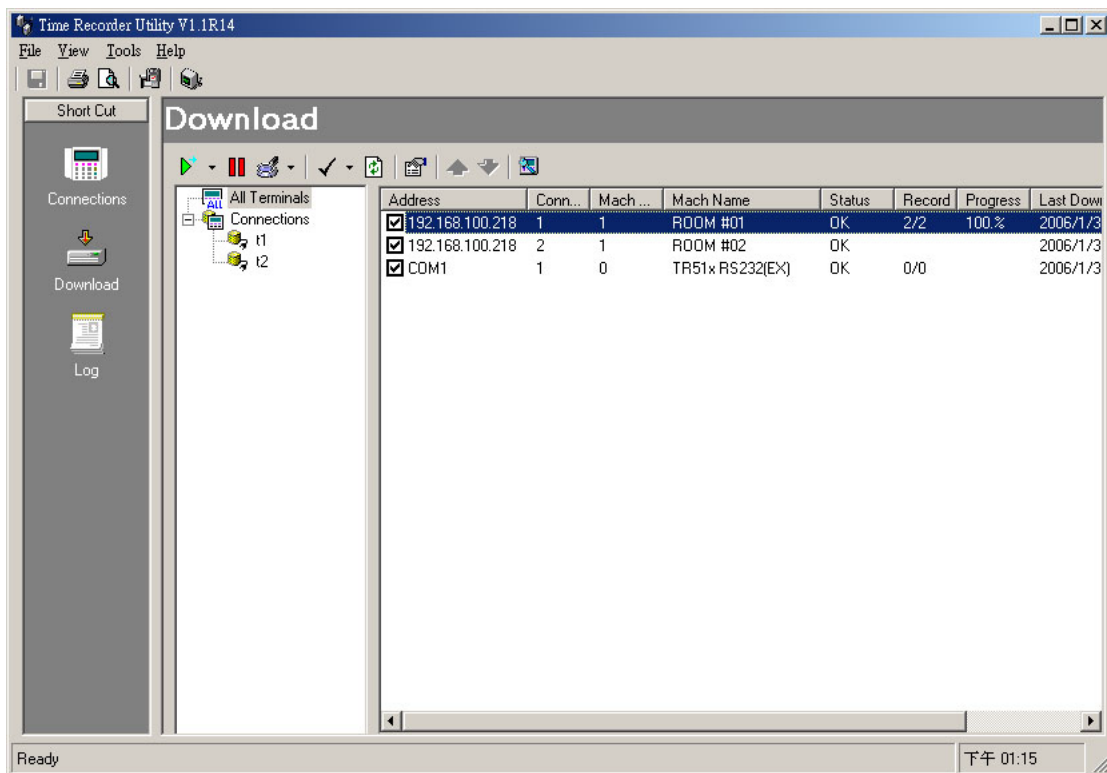
Default OK Cancel

If you want to run the Extended Mode (implements the Access Control function), please give each terminal a unique Machine Number. This unique number will identity each door (terminal) TRU connects.

Download Time Data

While users punch the time data, the Tag ID will be stored in the internal memory of terminal, associated with the date, time, event id and shift number (shift number is only for TR40xx series). There are two ways to get the stored time data out, one is via the floppy disk (if floppy drive is built in), another way is, this chapter will introduce, download it via communication cable.



After setting up the connections, all the terminals will be displayed in the [Download] inspection.

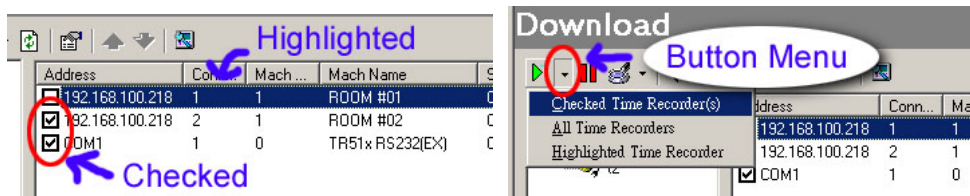


In this inspection, you can get a brief view of the properties of connected terminals, such as the machine number, name etc. If you want get more detail information, just double-click the list item, a properties window will pop up, which shows all the information of the selected terminal. Please keep in mind, some of the properties need to login first prior to modify.

Under Normal Mode, TRU provides two ways to download the time data: Download at once and Scheduling, which are detailed as below.

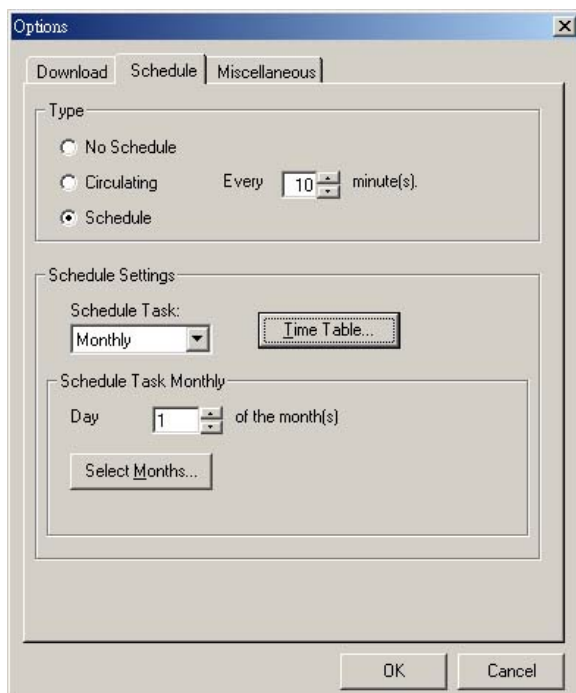
■ Download at once:

Select the checkbox on the list view, and then click  on the toolbar. All the time data of selected (checked) terminals will be downloaded and saved to the specified path. For flexible purposes, TRU also allows to download the highlighted one or specified terminals. To do this, click the button menu of  button, then click [Highlighted Time Recorder] or [Checked Time Recorder(s)].

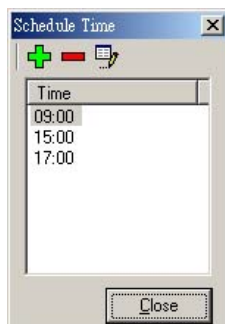


■ Scheduling:

By using Scheduling, you can schedule any time to download the time data. Scheduling starts each time you start the TRU program and is able to run in the background. With Scheduling, you can schedule a time to download time data daily, weekly, monthly, or at certain times. To configure the scheduled time, from [Tools] menu, click [Options]. On the [Options] window, click [Schedule] tab.



To enable the Scheduling function, select the Type to Schedule. First, select the [Schedule Task] for days period of scheduling, and then click [Time Table] to edit the specified times of downloading time data.



After completing the scheduling configuration, click [OK] to activate the settings.

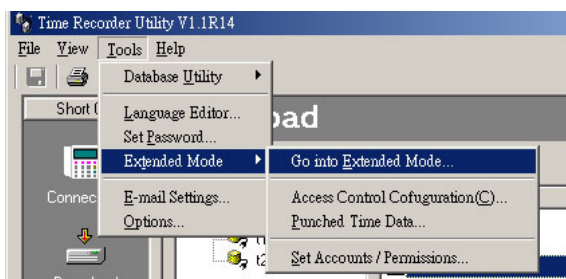
Extended Mode

While starting [Extended Mode], TRU will issue a [Extended Mode Login] command to the connected terminals of the connection that the type is with (EX) (refer to Running Modes section). If acknowledged, the terminal will go into Extended Mode until getting a [Extended Mode Logout] command.

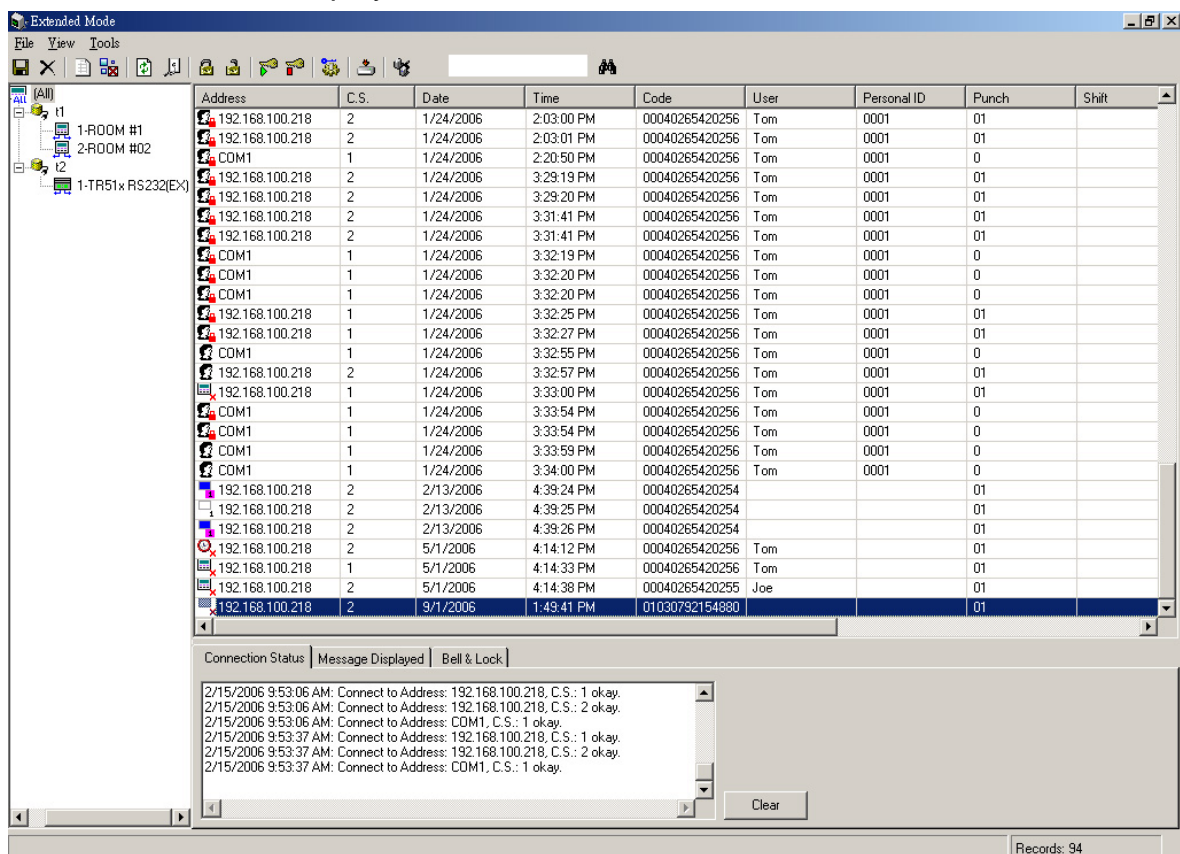
When the terminal is running on Extended Mode, the punch time data will send to the TRU instantly (the time data is also restored the data into the internal memory). After retrieving the time data, TRU will determine how to display the specified messages on the terminal screen, or trigger the relay depending on the security settings and rules.

To run the [Extended Mode], please follow below steps:

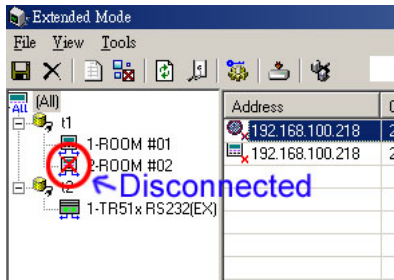
1. On main window, from [Tools]/[Extended Mode], click [Go into Extended Mode].



2. While the [Extended Mode] window pops up, it will automatically scan the connected terminals, and then displays on the tree view.

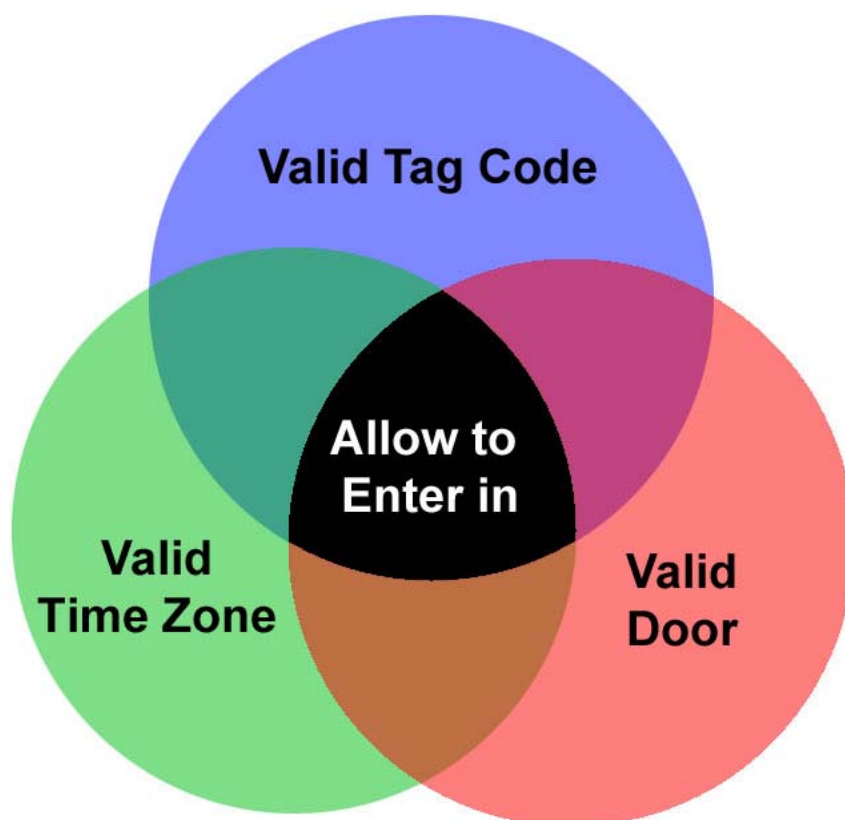


If the terminal is disconnected, a cross red symbol will paint on terminal icon.



Configure Security Settings

TRU provides three ways to secure the doors. It can verify a valid punch by 1) the tag code, 2) date / time and 3) the door (terminal).



If a punch is allowed, TRU will open the door (trigger the terminal's relay) and show the message on the terminal's screen. If not a valid punch, the door will not open and a warning message will be displayed on the terminal's screen.

For TR40xx series, the valid punch message is the user name. The invalid punch will display the reason why the punch is invalid.

For TR51x series, the valid or invalid punch message will be a message code (4 digital numbers).

To launch the security settings window, from [Tools] menu, click [Configure Access Control].

Add User

Name:

Code:

☒ Get tag code from terminal directly.

Personal ID:

Time Zone: (Default) ▼

Holiday Group: (Default) ▼

Control Assign:

Mach No	Connection	Mach Na...	C.S.
<input checked="" type="checkbox"/> 0	t2	TR51x R...	1
<input checked="" type="checkbox"/> 1			
<input checked="" type="checkbox"/> 2			

Select all
Deselect all

Department: <None> ▼

Title: <None> ▼

☐ Valid Period

Effective: 2006/1/6 ▼

Expired: 2006/1/7 ▼

Quick Set: To Next ▼ 1 ▼ Day(s) ▼

OK Cancel

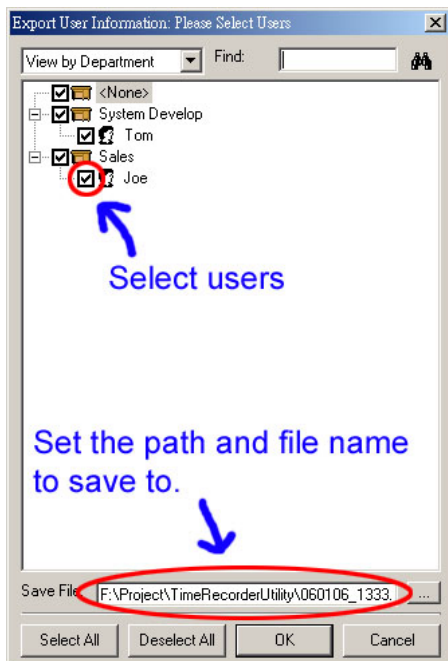
Two fields – [Name] and [Code] are needed to be entered. Below details the way of setting up the user information.


- **Name:** The user name.
- **Code:** The tag code. If the tag code extracted function of terminal properties is set, the code should be the extracted one. For example, if the tag code is 1234567890, for non-extracted setting, enter whole code 1234567890 in the Code field. If the extracted function is set, and the setting, for example, is extracted from 2, length is 5, then enter 23456 in the Code field.
- **Personal ID:** The Personal ID should be consistent with your HR, T&A or payroll settings.
- **Time Zone:** Defines the weekday and time period that the user is allowed to enter.
- **Holiday Group:** Defines the holiday and time period that the user is allowed to enter.
- **Control Assign:** Defines which doors (terminals) the user can enter. If two or more than two terminals share the same machine number, they will be treated as the same door.
- **Department:** The department that the user belongs to.
- **Title:** User's title (position).
- **Valid Period:** Defines the date period that the user can enter. This is most used to visitors, customers or inactive employees.

To modify defined user, select the user, click

To delete defined user, select the user, click

To save user settings to a file, click . After specifying the users and saved path and file name (extension name is .tdu), click OK to save the settings.



To import user settings file, click . Specify the file and then click OK to import the settings. If there are duplicate tag codes, the old ones in the database will be overwritten. The exported file of user settings is a text format file, you can use Notepad program to open it. Below is the content of the file.

Tom 0001	00040265420256	3	0,2	System Develop	Engineer	0
Joe 0002	00040265420255	4	0	Sales Manager		0

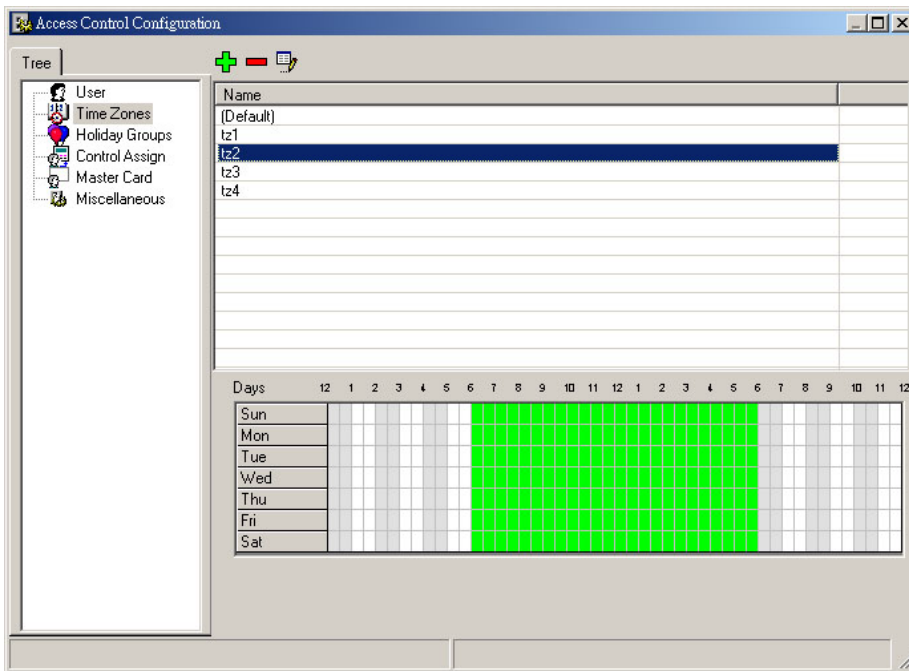
The fields name and sequence for each record are:

1. User Name
2. Personal ID
3. Tag Code
4. Time Zone Index
5. Machine Numbers Composition (allowed the user to enter)
6. Department Name
7. Title Name
8. Holiday Group Index

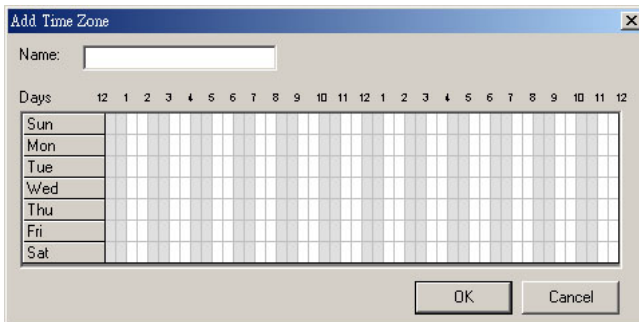
Each field is separated by TAB character. For Machine Numbers Composition field, each number is separated by comma character.

Time Zone

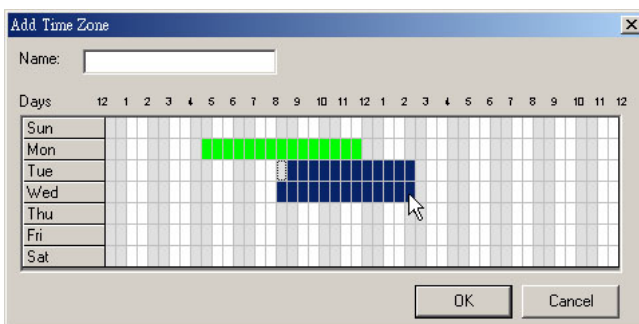
Time Zone defines the valid time period for entering the doors on every weekday (from Sunday to Saturday) in a week. By the Time Zone settings, TRU can limit the user to enter the doors in a certain time period and weekday.




To define a Time Zone, in the Time Zone inspection, click .



Give the new Time Zone a name, and then using the mouse to click (mark) or drag and drop the week grid to set the valid time period. The valid period time will be marked as green color.



To modify defined Time Zone, select the Time Zone on the list view, click .

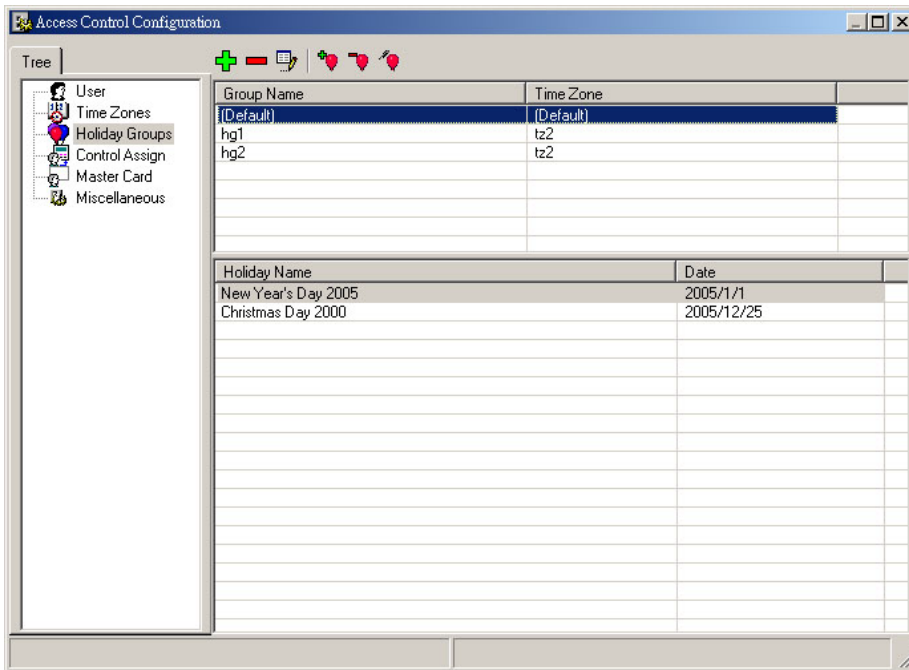
To delete defined Time Zone, select the Time Zone on the list view, click .


Because Time Zone only defines a week valid time period, TRU will treat the Time Zone as a week template and rotate it (the settings) on every week.

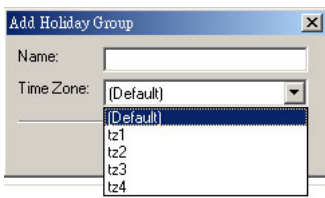
Holiday Groups

The purpose for Holiday Groups is to enhance the Time Zone function, because Time Zone


only defines a week template, which makes it not so flexible to meet some special day's requirements. For example, if 1/1 day is holiday and the weekday is Monday, then it should not be a workday and may not allow users to enter any doors. But for Time Zone settings, the Monday may be a workday that allows a certain people to enter the doors. By using Holiday Groups, it can meet this kind of needs.

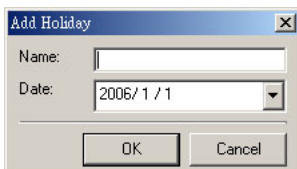


To add a new Holiday Group, in Holiday Group, click .




Give the new Holiday Group a name and select the Time Zone it will use, then click OK to save the settings. Before adding a new Holiday Group, you should create a Time Zone that is special for the Holiday Groups use.


Next step is to add the holidays, which are included in Holiday Group. Select the Holiday Group, and then click .




Give the holiday a name and select the date, then click OK to save the settings.

To modify defined Holiday Group, select the Holiday Group on the list view, click .

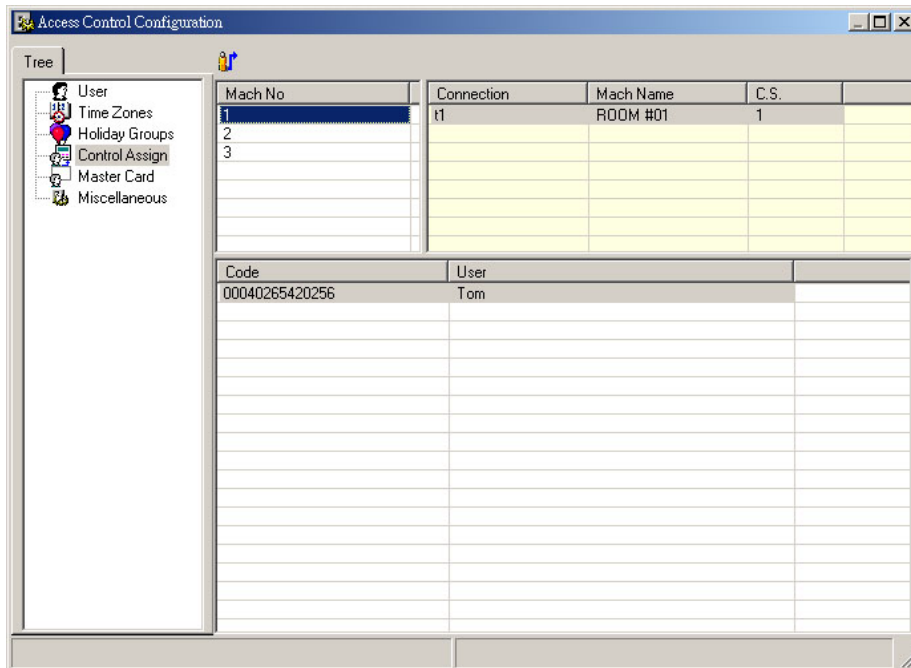
To delete defined Holiday Group, select the Holiday Group on the list view, click .

To modify defined holiday of Holiday Group, select the holiday on the list view, click .

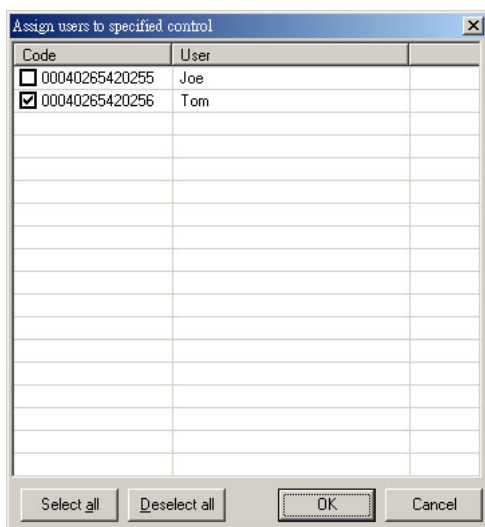
To delete defined holiday of Holiday Group, select the holiday on the list view, click .

Control Assign

Control Assign defines the doors (terminals) that who can enter in.



To assign the users to specified machine number of terminal, select the terminal, and then click .



Select the users then click OK to save the settings.

Master Card

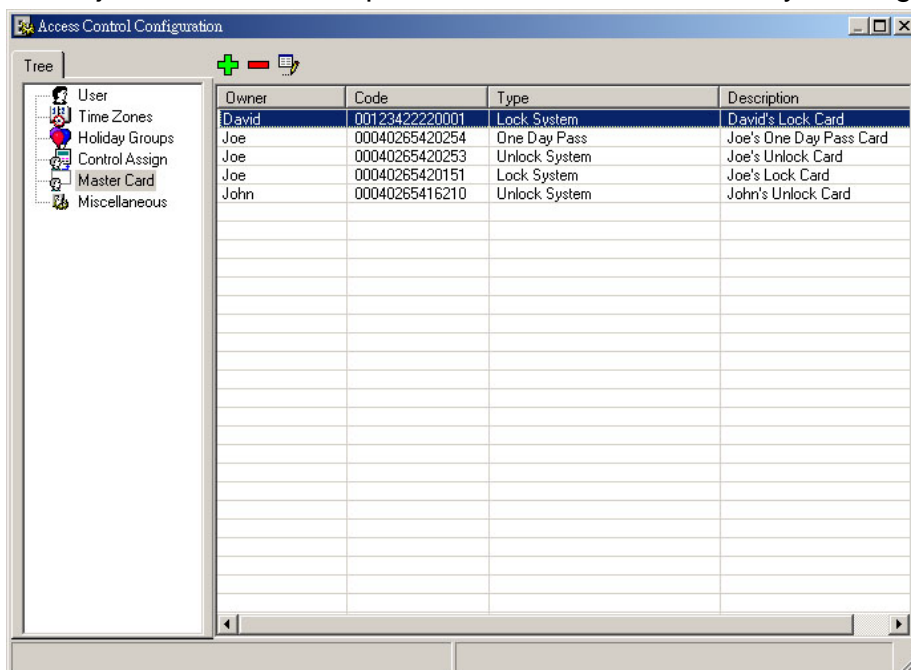
By using Master Card, it can be much more flexible for administrators to maintain the security system. There are three types of Master Card, details as below:

- **Lock System:** Once a Lock System master card is punched in any of terminals, all the doors will be locked. TRU will not open any doors even a valid tag is punched.
- **Unlock System:** While a Lock System master card is punched, the system will be in a

totally lock mode. You can use the Unlock System Master Card to punch any of terminals to disable the lock mode. Unlock System doesn't mean opening the doors.

- **One Day Pass:** This is most useful to make a quickly new tag for a one-day uses of visitor or customer. To define the one-day use tag is very simple; first, punch the One Day Pass master card. Second, punch another tag; TRU will define the second tag next to the One Day Pass master card as a one-day use tag. This tag is not limited by the Control Assign or Time Zone settings, which means it can enter all the doors and all the time period in the defined date.

Not like user defined tag, with a name given, the one-day use tag will not get a name associated with, which means you don't know who takes the one-day use tag to punch the terminals. The only information is the punch date, time and doors. But you can use a jotter to record the person who takes this one-day use tag while releasing.



To add a Master Card, in [Master Card] inspection, click

The 'Add Master Card' dialog box contains the following fields and controls:

- Owner: A dropdown menu.
- Code: A text input field.
- ☒ Get tag code from terminal directly.
- Type: A dropdown menu with 'Lock System' selected.
- Description: A text input field.
- OK and Cancel buttons at the bottom.

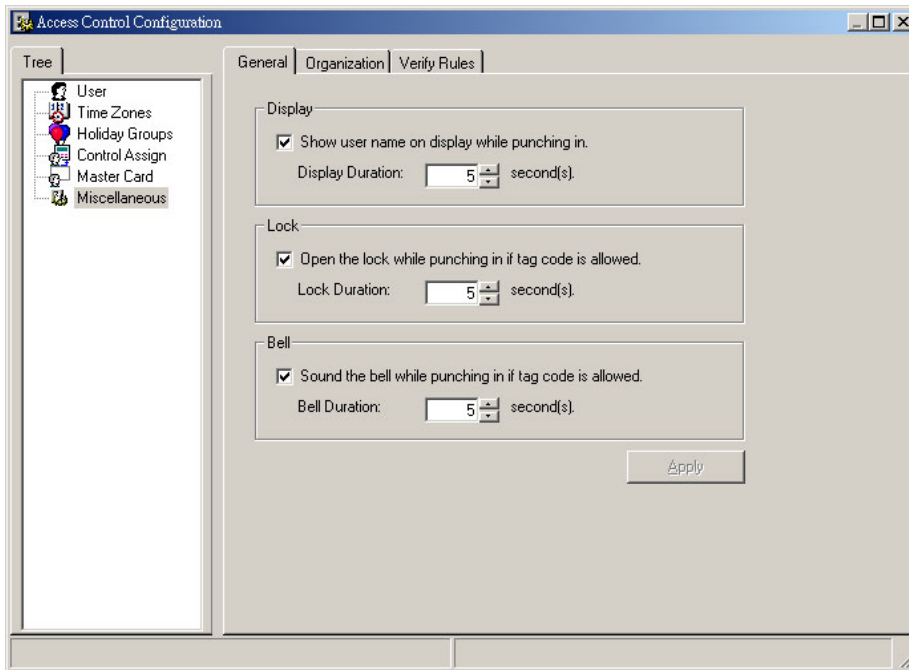
Enter the owner name and code; select the Master Card type, then click OK to save the settings.

To modify defined a Master Card, select the Master Card on the list view, and click

To delete defined a Master Card, select the Master Card on the list view, and click

Miscellaneous

- **General tab:** This tab defines the way of how TRU reply to the terminal if a punch time data is retrieved from terminal.



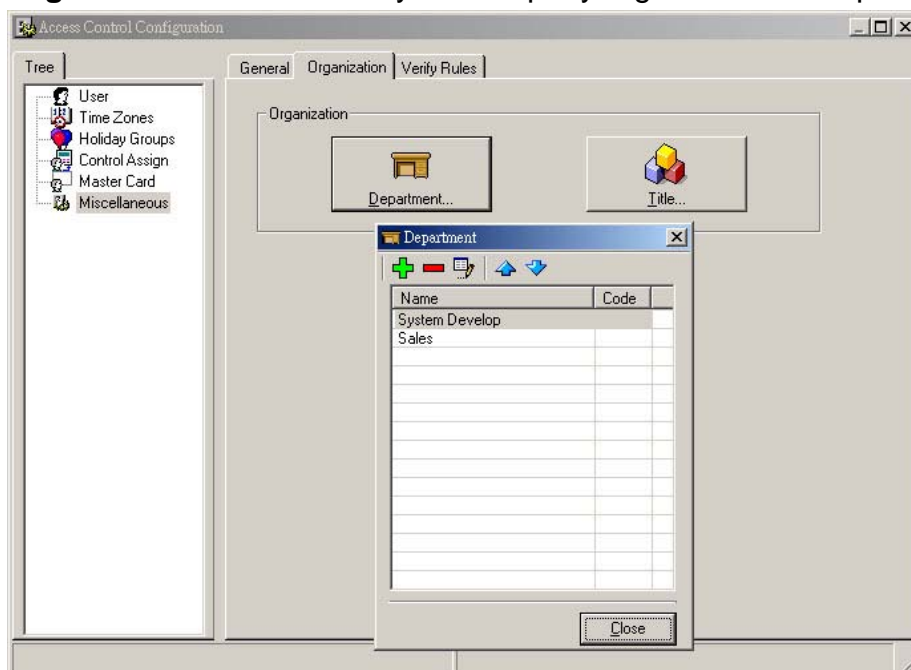
- **Display:** If selected, for TR4xx series, TRU will display the user name or the reason of invalid punch on the screen of terminal. For TR51x series, four digits will be displayed on the screen. Below table details the four digits.

Digits	Description
8800	Valid Punch
8801	Invalid Tag Code
8802	Invalid Time Zone
8803	Invalid Holiday Group
8804	Tag Code doesn't Take Effective
8805	Tag Code is Expired
8806	Lock System – Master Card Punched
8807	Unlock System – Master Card Punched
8808	One Day Pass – Master Card Punched
8809	One Day Use Tag
8810	Lock out - System is in Lock Mode
8811	Invalid Door (terminal)
8812	Invalid Prefix
8813	Invalid Suffix
8814	Valid Punch - Valid Prefix or Suffix Punch

Display duration defines how much time the message will be kept on the screen. If there is a punch during the displaying, TRU will clear the previous message and show the next one.

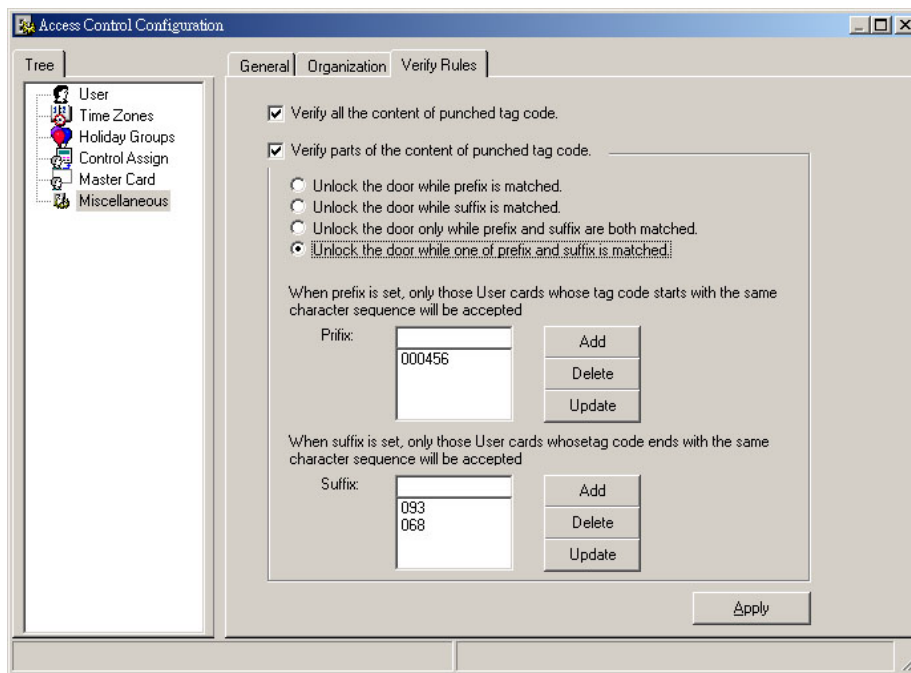
- Bell duration defines how much time it will last to sound the external speaker. The Bell setting is only available for TR40xx series.

- **Organization tab:** Defines your company organization – Department and Title.



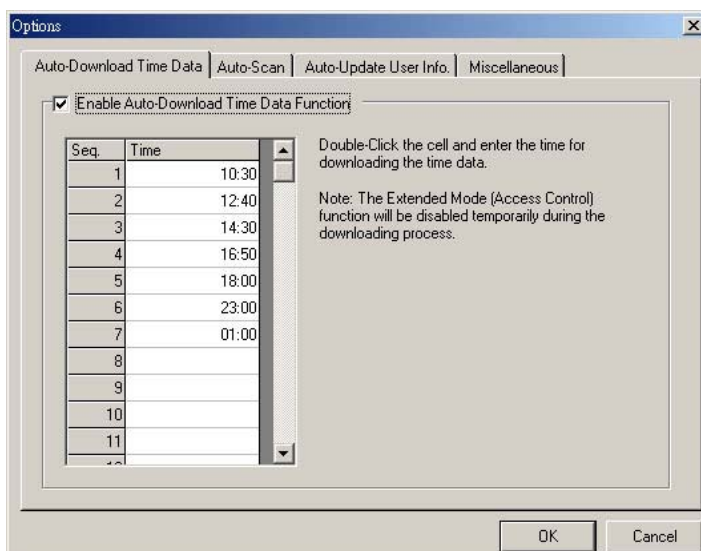
To set up the organization will help you to search or filter the concerned time data more quickly.

- **Verify Rules tab:** For a valid tag code, besides the defined user tags, TRU also provides another way to verify a valid tag code by its prefix and suffix.
To enable the prefix and suffix settings, just select the [Verify parts of the content of punched tag code] item.
Please be aware of the prefix/suffix settings, too many prefixes or suffixes will lower down the TRU system security.



Automation

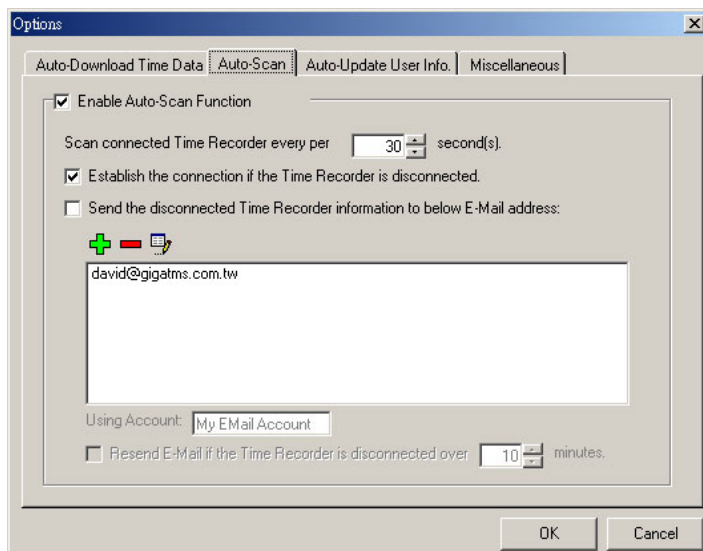
After TRU starts Extended Mode and establishes all the connections, it will STAY and WAIT for the incoming time data punched from terminals. If there are exceptions occurred at the remote connected terminals, like power off or memory full, it will not know. If such kinds of exceptions happen in TRU security system, the users may meet to be locked out of the doors. To setup the automation may reduce the exceptions but not eliminate completely, because PC crashed (TRU installed) may also cause the users to be locked out. To setup the automation, from [Tools], click [Options].



- **Auto-Download Time Data tab:** While users punch the tag, terminal will store the tag code to internal memory. From time to time, when the memory is full, users can't punch tags anymore. The time data in memory must be downloaded and removed before next new punch. Of course, the administrators can do this by manually (return to

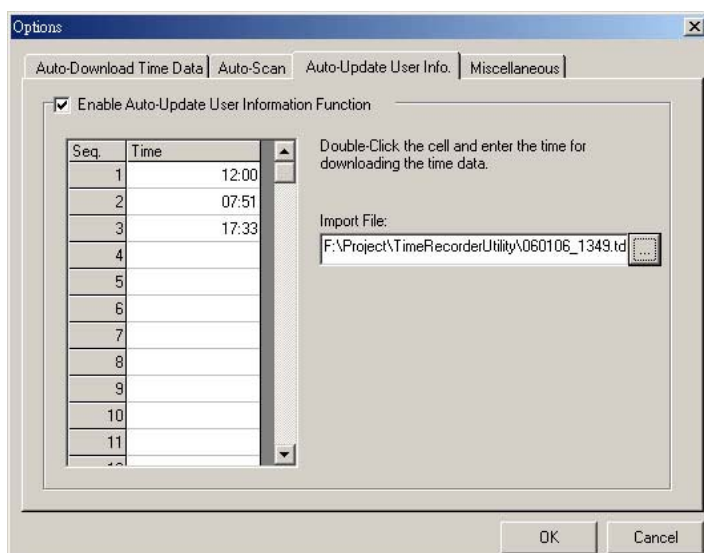
Normal Mode and download / clear the time data), but by enabling the auto-download time data function will be more reliable to ensure the memory is not going to be full. There are 24 time periods you can set. When the time is up, TRU will return to Normal Mode and download the time data automatically. After the time data is downloaded and cleared completely, TRU will back to Extended Mode.

1. **Auto-Scan tab:** While the terminal's TCP connection is closed (only for Ethernet interface terminal) or the running mode is in Normal Mode (on terminal side, not TRU), TRU will not get the punch time data of the problem one terminal in real-time. The busy network or connection timeout may cause TCP disconnected, and the not in Extended Mode of terminal may be caused by that the terminal has ever been powered off and on again (the default mode for terminal is Normal Mode). These two exceptions can be solved by enabling the auto-scan function. Please take notes; too much frequency scanning the terminals may eat much more PC resources, and it will also slow down the reaction (open door or display messages) of TRU to terminal.

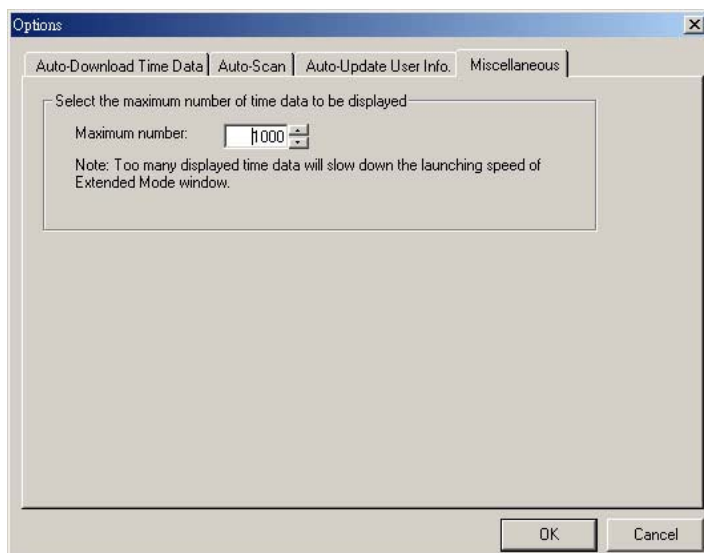


But if the disconnection is caused by the no-power terminal or disconnected communication cable, then there is no way to establish the connection. For TRU, in this kind of exceptions, you can set up the auto-email function to inform the administrator(s) where the disconnected door (terminal) is and the time that exception happens (The email account must consist with your MS Outlook Express's account).

- **Auto-Update User Info. tab:** This function has nothing to do with the system exceptions. If you have your own program and want to define the user information by yourself (your program), including user name, tag code and allowed entering doors etc, and often to make modification, then you may need this function.
First, your program must export the user information to a file, which the format is detailed in [export file format](#) of User definition section. Second, set the update timetable for importing and updating the user information to TRU database. Please take notes; the duplicated user (tag code) will be overwritten.



- **Miscellaneous tab:** This setting defines how many time data will be displayed in the Extended Mode main window. Too many displaying records will slow down the launching speed of Extended Mode.



View Time Data

Under Extended Mode, TRU displays the retrieved time data on the list view, and uses the icons to present the punch results of tag verification.

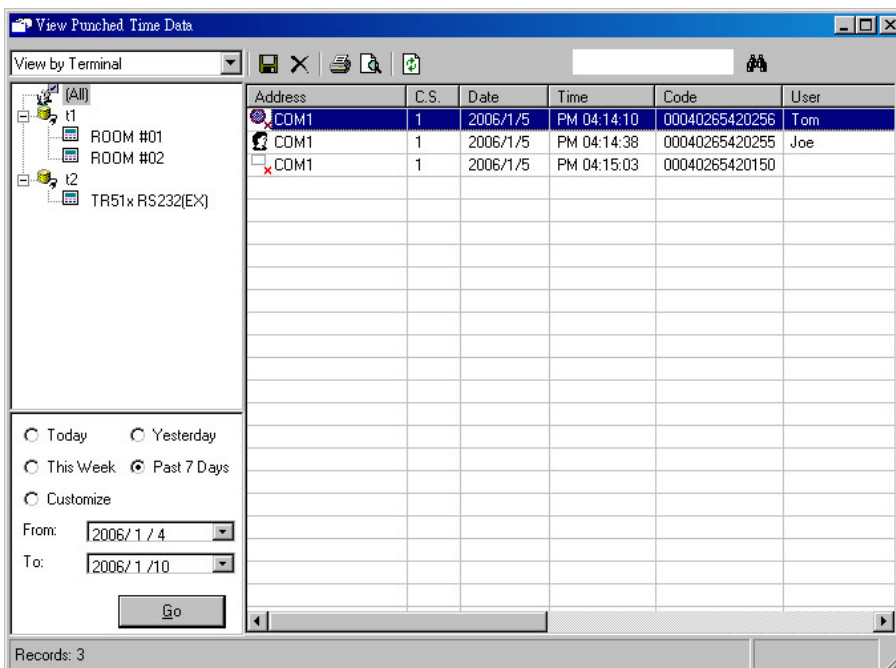
Address	C.S.	Date	Time	Code
COM1	1	2006/1/5	PM 04:14:10	00040265420258
COM1	1	2006/1/5	PM 04:14:38	00040265420258
COM1	1	2006/1/5	PM 04:15:03	00040265420150
192.168.100.218	2	2006/5/1	PM 04:14:12	00040265420258
192.168.100.218	1	2006/5/1	PM 04:14:33	00040265420258
192.168.100.218	2	2006/5/1	PM 04:14:38	00040265420258

Using icons to present the punch result

Below table details the presentation of the icons.

Icon	Description
	Valid Punch
	Invalid Tag Code (not defined)
	Invalid Time Zone
	Invalid Holiday Group
	Tag Code doesn't take Effective
	Tag Code is Expired
	Lock System – Master Card Punched
	Unlock System – Master Card Punched
	One Day Pass – Master Card Punched
	One Day Use Tag
	Lock out - System is in Lock Mode
	Invalid Door (terminal)
	Invalid Prefix
	Invalid Suffix
	Valid Punch - Valid Prefix or Suffix Punch





Because the main window of Extended Mode only displays a certain number of time data, if you want to view more or all records, or want to get the concerned time data right away, please use the [View Punched Time Data] window. To launch this window, from [View] menu, click [Punched Time Data].

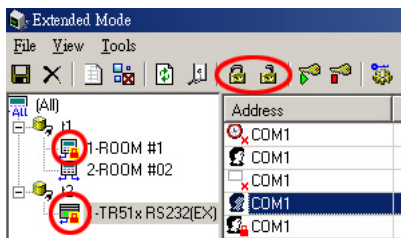


In this window, you can filter the time data by departments, titles, connections, terminals and the date range specified. It also allows you to export or print out the filtered time data.





Handle the Terminals

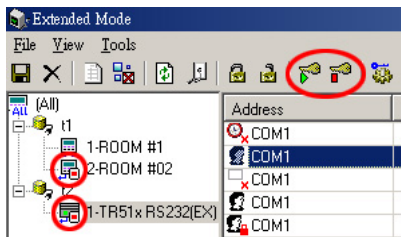
Lock specified terminal

In some cases, you will need to lock certain door(s) that not allows any person to enter in, no matter a valid or invalid tag punches on the terminal. To do this, select the terminal (in the tree view of terminals list), on the toolbar, click . The selected terminal will change to lock mode (for TR40xx terminal, icon changed from  to ). To return the lock mode back, on the toolbar, click . Although the terminal is set to lock mode, the terminal still sends out the punch time data to TRU, which will display on the list view and store into the database.



Set specified terminal to Normal Mode

If you want to verify the punch by terminal itself (check the tag code by the prefix setting of terminal), select the terminal, click . The selected terminal will be in the Normal Mode (for TR40xx terminal, icon changed from  to ). To return the selected terminal back to Extended Mode, on the toolbar, click . While the terminal is in Normal Mode, the punch time data will not send out to TRU, which means this data will not be displayed on the list view of program, but will be still stored in the internal memory of terminal.



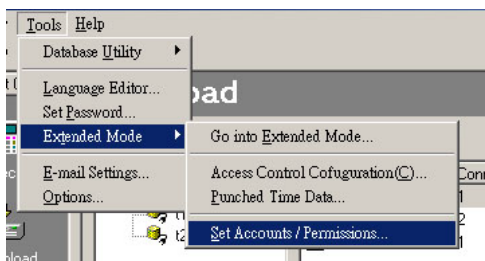
TRU - Client Program

TRU provides a way of sharing the database file to allow client program viewing and editing the database, such as security configuration, viewing time data. By using this way, you can install the TRU program into a PC that not so many people to operate, which can ensure the TRU can work without any incident or man-made exceptions happen.

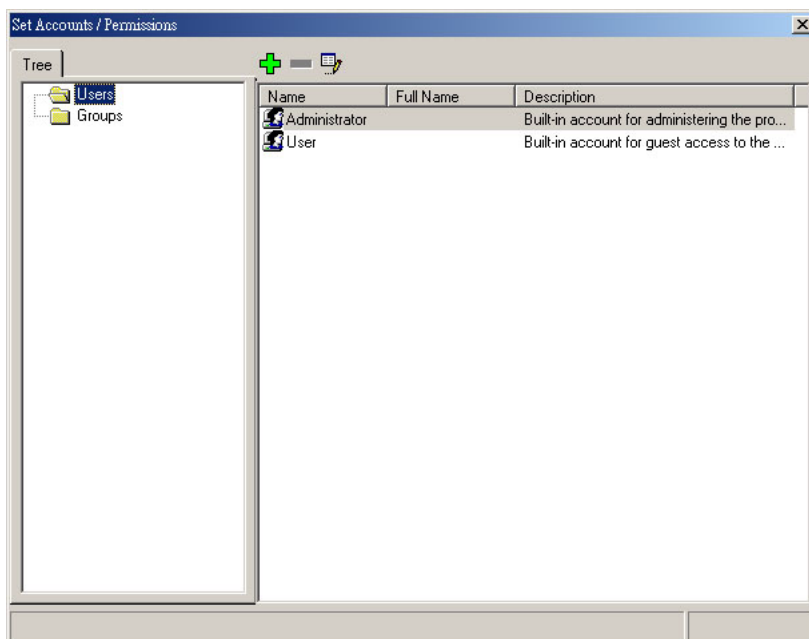
TRU also provides user-level security (permissions) to limit client user to access the database. For example, a client user may only allow viewing time data but can't edit the security configuration.

User Level Security – Set Accounts and Permissions

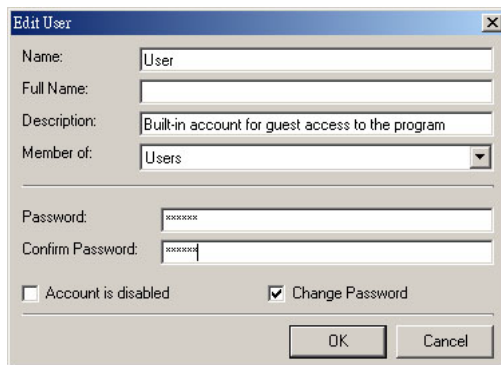
Before starting the client program, the user accounts and permissions have to be set up firstly. To setup the accounts and permissions, under TRU's Normal Mode main window, from [Tools] / [Extend Mode], click [Set Accounts / Permissions].



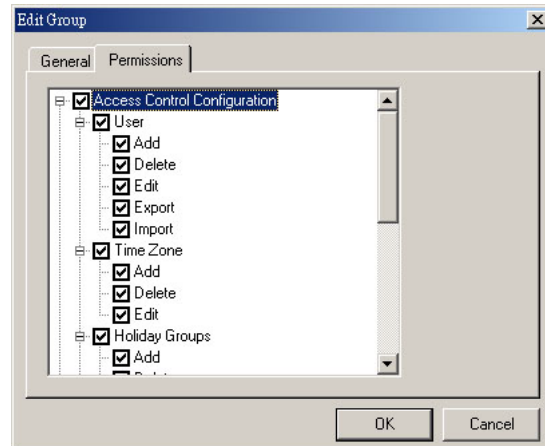
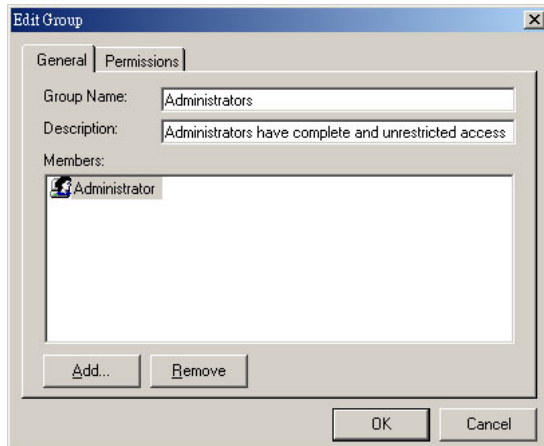
Pops up the main window.



- **Users folder:** Defines the users account, password and the Groups that belongs to.

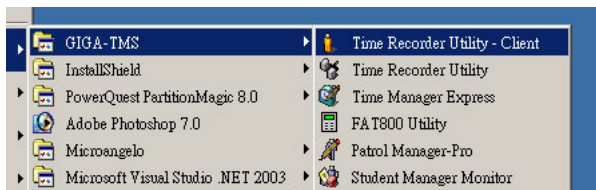


- **Groups folder:** Defines the group name, users belong to, and the permissions.



Installation

The setup files of TRU – Client program is located in the [Client] folder of Setup CD. Double-clicking the setup.exe file to install the program. The program short cut is located in the [Start] / [Programs] / [GIGA-TMS] / [Time Recorder Utility - Client].

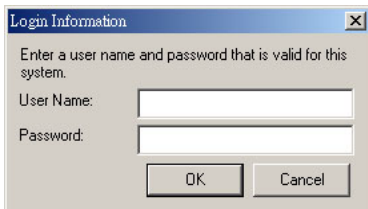


First Launch

For the first launch, TRU – Client will inquire the file and path of TRU database (TR.mdb).

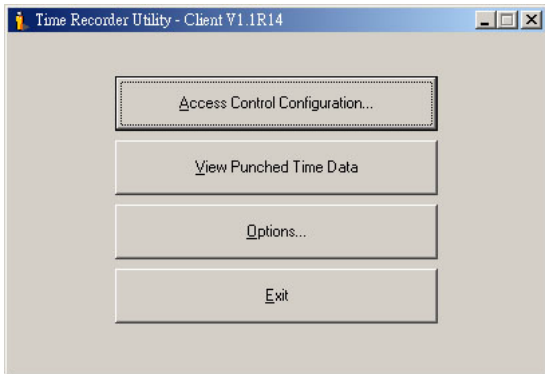


After locating the file, a login window will pop up.



(Default account - **User Name:** User, **Password:** 0000)

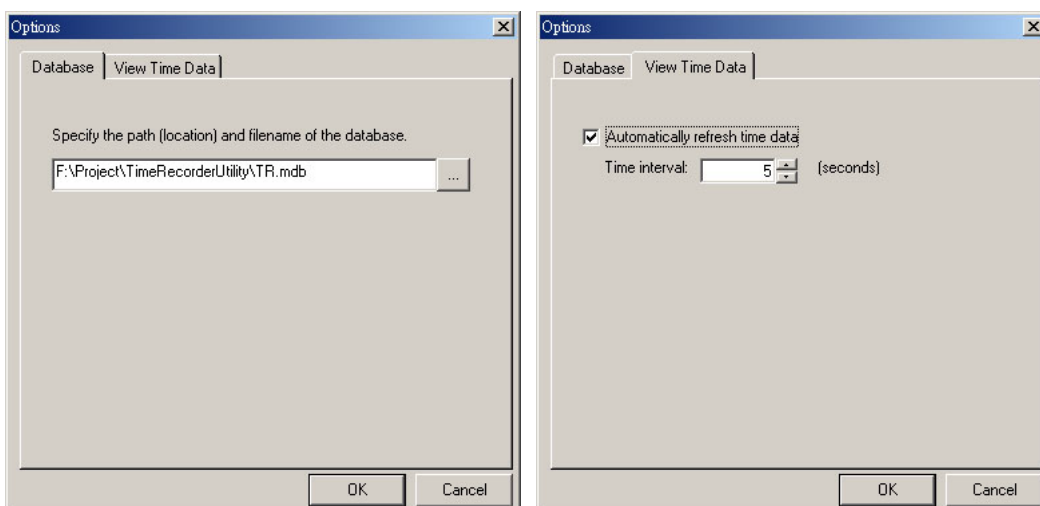
Enter a valid user name (case-sense) and password, pops the TRU – Client main window.



Run the TRU – Client program

Below details how the command buttons of main window work.

- **Access Control Configuration:** Launch [Access Control Configuration] window, which is totally same to the TRU program. But some functions may be limited to access depending on the permissions settings.
- **View Punched Time Data:** Launch [View Punched Time Data] window, which is totally same to the TRU program.
- **Options:**



- **Database tab:** Locate the path of TRU database file.
- **View Time Data tab:** Set the frequency of refreshing time data. You also refresh the time data by manually.
- **Exit:** End program

Maintain Database

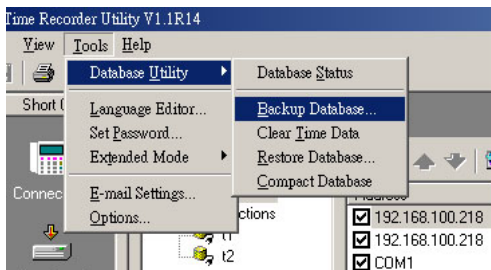
From time to time, it is important for the TRU database to be backed up, purged and compacted. The frequency at which these tasks are performed depend on the size of your time data and the speed at which the TRU database file is growing.

Before we continue, read the definitions of each action that can be performed on the TRU database:

- **Backup Database** – This function makes an copy of the TRU database as of the time the function is executed. This is very useful for keeping a copy of your data file in case of a disaster. It should be performed on a weekly basis or even more frequently if the data in TRU is extremely important. This method of backup should not take the place of a normal daily tape backup.
- **Clear Time Data** – This function can be used to delete all time data records, which are retrieved under Extended Mode. This should never be done without first performing a backup. When time data is removed from the database, it can never be recovered. This function rarely needs to be performed, if at all.
- **Restore Database** – This function can be used to import the backup database. Please keep in mind; the current database settings will be overwritten by the imported database.
- **Compact Database** – To increase performance, when records are deleted from the TRU database, they are not permanently deleted. However, when many deleted records accumulate in the TRU database, it can hinder performance. To permanently remove deleted records (and therefore reduce the size of the database and increase performance) 'Compacting' the database is recommended on a monthly or semi-monthly basis.

A good indication of when you should clear time data is when TRU performance seems to have slowed considerably due to the increase in file size (usually well over 10MB). If reporting is taking much longer than it used to, it might be time to clear time data.

All the database maintenances are all running under Normal Mode.



Backup Database

To backup data, follow these instructions:

- From **Tools** menu, click **Database Utility/Backup Database**.
- You will be asked to give a path name for the copy of the database. Enter a valid path name and click OK.

Clear Time Data

To clear time data, follow these instructions:

- From **Tools** menu, click **Database Utility/Clear Time Data**.
- You will be given a warning. Read the warning and click **OK** if you wish to remove time data from the database.

Restore Database

To restore database, follow these instructions:

- From **Tools** menu, click **Database Utility/Restore Database**.
- You will be given a warning. Read the warning and click **Yes** if you wish to continue.
- Specify the path that the backup database is located.
- Click **Open** if you are certain you want to continue.

Compact Database

To compact the database, follow these instructions:

- From **Tools** menu, click **Database Utility/Compact Database**.

FAQ

Q: How do I know my current use terminals are supported Extended Mode or not? If not supported, can I upgrade the terminals' firmware to meet the needs?

A: For TR40xx version, only TR40xx-20 models are supported (firmware version is V3.69 or later). For TR51x series, the firmware version is V1.81 or later.

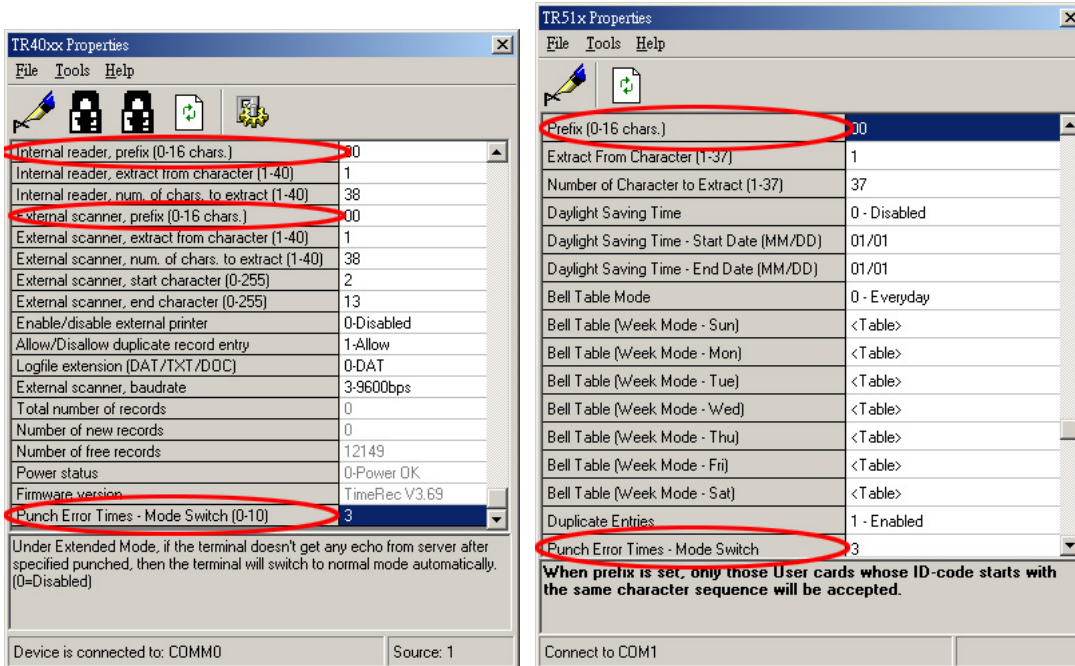
You can use the [\[Terminal Properties\] window](#) to view the firmware version.

For the TR51x series, they all can use firmware upgrade method to get the new features of implementing Extend Mode. For TR40xx series, if the interface is RS232, then they all can use the firmware upgrade method; if is Ethernet interface, only using TCP protocol

(TR40xx-10/TR40xx-15/TR40xx-20) can be upgraded, which means, the TR40xx-00 model, with UDP protocol is not available for the Extended Mode.

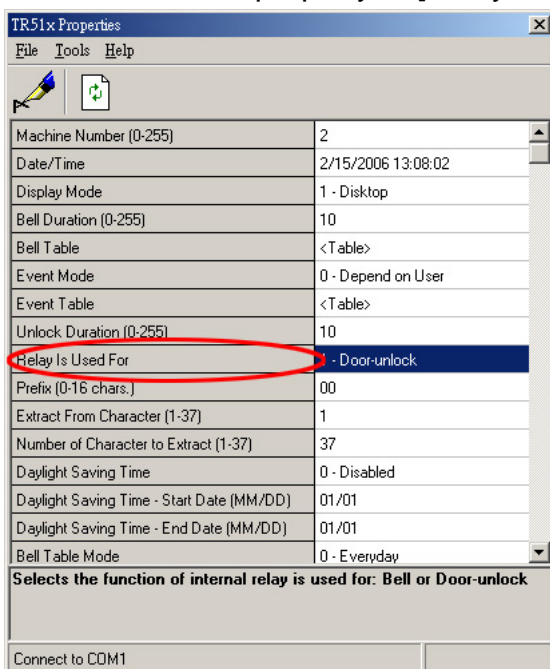
Q: Can terminal switch to Normal Mode automatically while disconnected to server PC?

A: Yes, to achieve this, needs two properties to be set on the terminal. One is the [Prefix] property; another is [Punch Error Time – Mode Switch] property.



Q: Why TR510 can't open the door (activate the relay) under Extended Mode even a valid tag code is punched in?

A: Make sure the property of [Relay is Used for] is set to [0 – Door unlock].



Contact Us

Giga-TMS Inc.

8F, No. 31, Lane 169

Kang Ning Street

Hsi Chih City

Taipei

Taiwan ROC

Tel: +886-2-2695-4214

Fax: +886-2-2695-4213

E-mail: gigatms@ms3.hinet.net

Or visit us on the World Wide Web at <http://www.gigatms.com.tw>